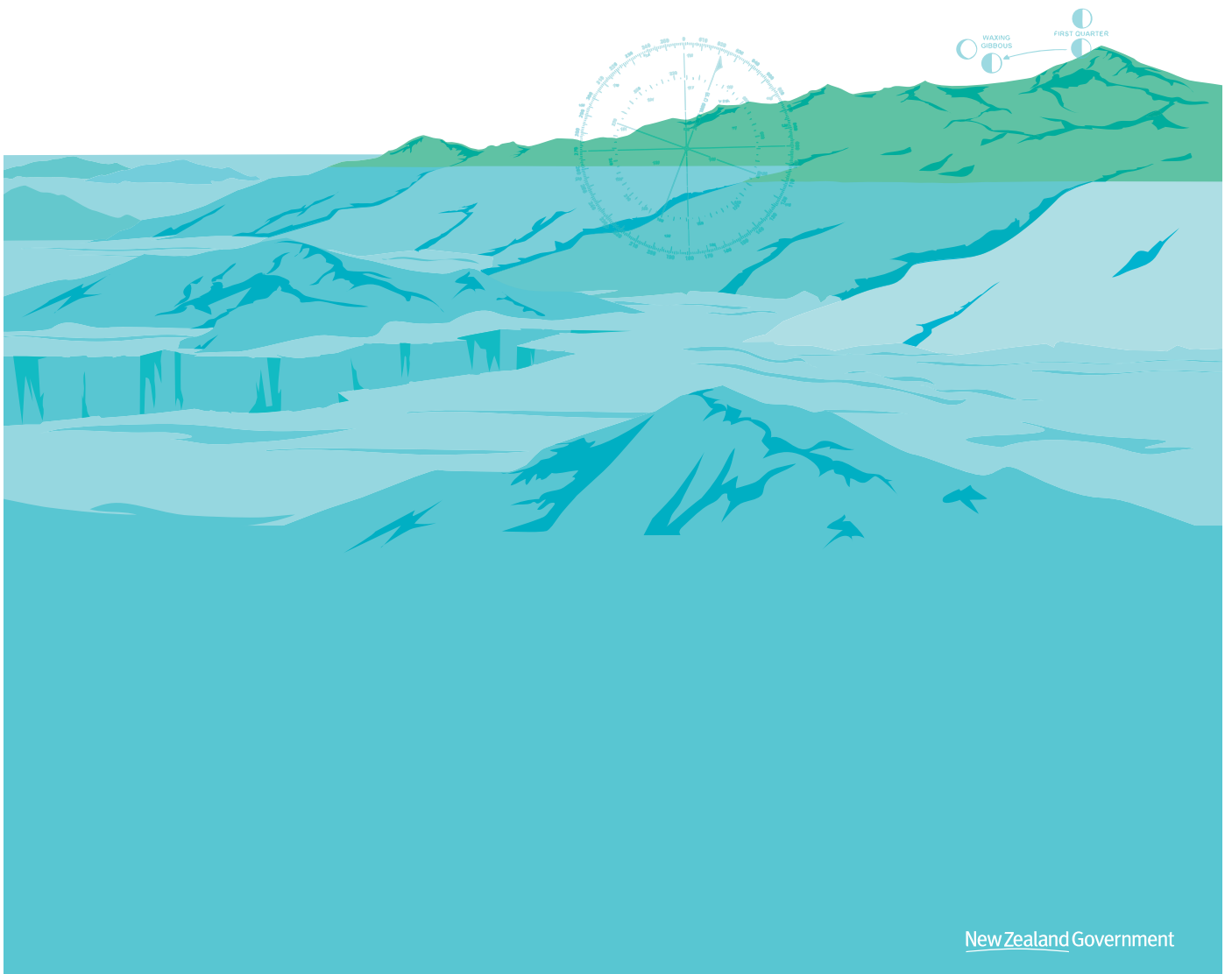


# NEW ZEALAND CHART CATALOGUE

15<sup>TH</sup> EDITION | NZ 202





# NEW ZEALAND

## CHART CATALOGUE

15<sup>TH</sup> EDITION

# NZ 202

Published December 2010

## CONTENTS

Record of Corrections .....	2
NZ Charting Area .....	3
Chart Catalogue .....	4
Chart Information .....	5
Use of Charts .....	6
Product Information .....	7
NZ Carriage Requirements & Chart Retailers .....	8
Maritime Safety Information .....	9
Indexes	
Pacific Ocean .....	10 & 11
New Zealand .....	12 & 13
North Island .....	14 & 15
South Island .....	16 & 17
Northern Zone .....	18 & 19
Auckland Zone .....	20 & 21
Cook Strait Zone .....	22 & 23
Southern Zone .....	24 & 25
South West Pacific Ocean .....	26 & 27
Tonga .....	28 & 29
Southern Ocean and Ross Dependency .....	30 & 31
Numerical Chart List .....	32
Notes .....	33

ISSN 0113-5597

**Published by Land Information New Zealand  
National Hydrographic Authority**

Crown Copyright Reserved

## RECORD OF CORRECTIONS PUBLISHED IN THE NEW ZEALAND NOTICES TO MARINERS

This Catalogue is corrected up to NZ NTM Edition 25/2010 dated 10 December 2010.

Subsequent amendments to this Catalogue will be published in Section IV of the New Zealand Notices to Mariners (NTM).

Copies of the NZ NTM Edition are available from the LINZ website:

[www.linz.govt.nz/hydro](http://www.linz.govt.nz/hydro)

See the list below to know when corrections have been applied to the Chart Catalogue:

### 2010 Edition Number

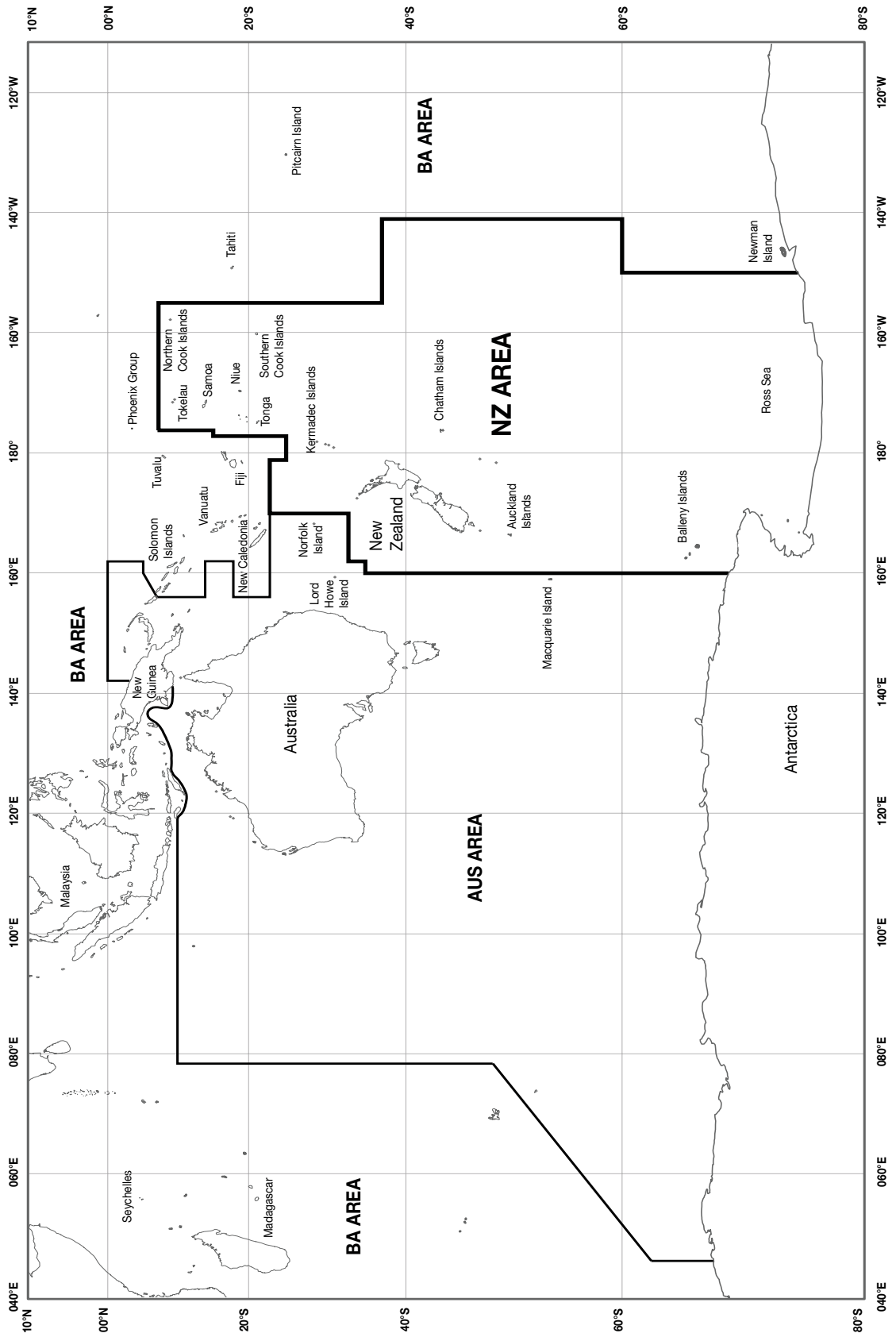
### 2011 Edition Number

1 Nil .....	1 .....
2 Nil .....	2 .....
3 Nil .....	3 .....
4 Nil .....	4 .....
5 Nil .....	5 .....
6 Nil .....	6 .....
7 Nil .....	7 .....
8 Corrected .....	8 .....
9 Nil .....	9 .....
10 Corrected .....	10 .....
11 Nil .....	11 .....
12 Corrected .....	12 .....
13 Nil .....	13 .....
14 Corrected .....	14 .....
15 Corrected .....	15 .....
16 Nil .....	16 .....
17 Nil .....	17 .....
18 Nil .....	18 .....
19 Nil .....	19 .....
20 Nil .....	20 .....
21 Nil .....	21 .....
22 Nil .....	22 .....
23 Nil .....	23 .....
24 Corrected .....	24 .....
25 Corrected .....	25 .....
26 .....	26 .....

# NZ CHARTING AREA

In accordance with agreements between New Zealand (NZ), Australia (AUS) and the British Admiralty (BA) for reducing duplication in charting activities, New Zealand has a defined Charting Area (**NZ AREA**).

## AREAS OF NEW ZEALAND CHARTING AND COVERAGE OF NOTICES TO MARINERS



# 4

## CHART CATALOGUE

### Introduction

Land Information New Zealand (LINZ), the New Zealand Hydrographic Authority produces official nautical Charts to aid safe navigation in NZ waters and certain areas of Antarctica and the South West Pacific within the NZ AREA as shown in the diagram on page 3. They are available for purchase from LINZ approved Chart retailers. Page 8 of this document has more information and for full contact details visit the LINZ website: [www.linz.govt.nz/hydro/](http://www.linz.govt.nz/hydro/).

This Chart Catalogue (NZ 202) lists the Paper Charts produced by LINZ, New Zealand Hydrographic Authority. The Charts are grouped into the regions they cover and basic information such as Chart number, title, scale, published and new edition dates is provided.

There is also an online Chart Catalogue which allows the Mariner to search all NZ Charts by region or number/title. Each Chart web page provides a full record of all NTM relating to each Chart and allows the user to view each individual NTM. Both the online version and this downloadable PDF Chart Catalogue are available from the LINZ website.

### Notice To Mariners

Using Charts safely involves keeping them up-to-date using NTM. LINZ publishes NTMs in fortnightly editions of New Zealand Notices to Mariners. These are safety critical messages affecting Charts originated by LINZ, New Zealand Hydrographic Authority. There are two main types of NTM:

- Annual NTMs are numbered from 1–18 and are published each July as part of the NZ Nautical Almanac (NZ 204). They provide important safety critical information for the Mariner and are updated as required by NTM.
- NTMs are numbered sequentially from 19 starting with the first NTM Edition issued each January and are the authority for correcting official NZ Charts and nautical publications. For more details on the content of this service see the NTM section on the LINZ website.

LINZ NTMs are the authority for correcting New Zealand and International Charts (INT) of the NZ AREA. These notices are repeated in British Admiralty editions of NTM; Charts may therefore be corrected from either publication.

### Reporting Safety Information

It is very important for Mariners to notify LINZ immediately of any new or suspected dangers to navigation or any shortcomings in Charts and publications. This will ensure an NTM can be issued and Charts can be kept up to date. The preferred format for providing LINZ with this information is the Hydrographic Note (H Note). This form can be completed on the LINZ website and submitted electronically. Alternatively, a printable version of the H Note can be downloaded, filled out and faxed to LINZ. A paper copy of the H Note can also be found at the back of each NTM Edition and in the Nautical Almanac.

**Land Information New Zealand  
National Office  
New Zealand Hydrographic Authority  
Private Box 5501  
Wellington 6145  
New Zealand**

**Free phone (NZ): 0800 665 463  
or +64 4 460 0110  
Fax: +64 4 460 0161  
Email: [info@linz.govt.nz](mailto:info@linz.govt.nz)**

Changes to or defects in aids to navigation should be reported to the Rescue Coordination Centre New Zealand (RCCNZ), either via the nearest radio coast station or:

24-hour emergency Phone (NZ): 0508 472 269  
Phone (INT): +64 4 577 8030  
Fax (NZ): (04) 577 8038  
Fax (INT): +64 4 577 8038  
Email: [rccnz@maritimenz.govt.nz](mailto:rccnz@maritimenz.govt.nz)  
Inmarsat-C (POR): 451 200 067

### Amendments to Chart Catalogue

The Charts listed in the Catalogue are updated by NTM as safety critical information is received. Amendments to this Chart Catalogue will be published in Section IV of the New Zealand NTM Edition.

## System of Chart numbering

The Chart number is printed in the two opposite corners on the face of each Chart and also appears on the label on the back of each copy.

Small scale planning and passage Charts of the Pacific and Southern Oceans (1:400 000-1:10 000 000) have five figure numbers beginning with 1. Small scale Charts of New Zealand's Exclusive Economic Zone have two figure numbers beginning with 2 or 3. Small scale Charts of the Pacific Islands have two figure numbers beginning with 8 or 9.

Medium scale coastal Charts of New Zealand (1:75 000-1:400 000) have two or three figure numbers beginning with 2, 4, 5, 6 or 7, the first figure being related to a particular area. Medium scale Charts of the Pacific Islands have two or three figure numbers beginning with 8 or 9, the first two figures being related to a particular island group.

Large scale Charts of both New Zealand and the Pacific Islands (1:5 000-1:75 000) have four figure numbers, the first two or three figures being the number of the next smaller scale Chart within which that Chart falls.

## Units used on Charts

The majority of New Zealand Charts now have depths and heights in metres. DEPTHS IN METRES is boldly stated in the Chart title and in the border. Those Charts not yet metricated state depths in fathoms and heights in feet in the title. DEPTHS IN FATHOMS is boldly stated outside the chart border. In this Catalogue a fathoms Chart is indicated by an asterisk placed against the number. These charts will be progressively replaced by metric charts.

## Publishing, new editions and NTM

The date of publication is shown in the centre under the bottom border of the Chart. Edition dates are inserted to the right of the publication details. When a Chart has been corrected by NTM, the year and number of the Notice is recorded at the bottom left-hand corner of the Chart. If a Chart is in stock it is hand corrected and the correction is incorporated in the next print. When a New Edition is issued all earlier copies of the Chart are cancelled.

## International Charts

To improve charting of ocean areas without duplication of cartographic effort by many nations, the International Hydrographic Organisation (IHO) has achieved international agreement for three series of International Charts at scales 1:1 500 000, 1:3 500 000 and 1:10 000 000 in the South West Pacific.

LINZ publish these INT Charts in the NZ AREA, which provides the Mariner with worldwide coverage to a uniform specification. As part of this series NZ has 29 Charts covering its adjacent oceans and seas.

Each Chart has an international number with the prefix INT and a second number prefixed with NZ. INT Charts may be reprinted by other Member States of the IHO, with minimum of modification. In addition to the Chart's international number, the Chart may bear a national number assigned by the reprinting Member State.

International Charts are maintained by NTM and IHO Member States have undertaken to repeat all Notices affecting International Charts that they reprint. Mariners can therefore use NTMs published by either the originating or reprinting nation to correct these Charts.

## Special purpose Charts

The Exclusive Economic Zone of New Zealand and various fishing limits are included on Charts NZ 223F and NZ 224F.

## Advice on the use of Charts

For voyages within the NZ Area Mariners should ensure that the Charts and publications on board their vessel are adequate for their purposes and up to date according to this Catalogue and NTM Editions. For voyages beyond New Zealand, the appropriate Charts, NTMs and nautical publications produced by the British Admiralty, Royal Australian Navy and SHOM (France) should be used. Charts are an aid to navigation and the degree of dependability must be subject to the judgement of the user.

A source statement is given either in the title of a Chart stating survey authorities with dates, or in a source data diagram showing dates and areas of surveys. For further explanation see the Admiralty Mariner's Handbook (NP 100).

Charts should be used with prudence; there are areas where the source data are old, incomplete or of poor quality. The Mariner should use the largest scale appropriate for their particular purpose; apart from being the most detailed, the larger scales are usually corrected first. When extensive new information (such as a new hydrographic survey) is received, some months may elapse before it can be fully incorporated in published Charts. On small scale Charts of ocean areas where hydrographic information is in many cases still sparse, charted shoals may be in error as regards position, least depth and extent. Undiscovered dangers may exist, particularly away from well-established routes.

## Reliance on Charts and Associated Publications

While every effort is made to ensure the accuracy of the information on NZ Charts and other publications, it should be appreciated that the information may not always be complete and up to date. The Mariner must be the final judge of the reliance to be placed on the information given, bearing in mind their particular circumstances, the need for safe and prudent navigation, local pilotage guidance and the judicious use of available navigational aids.

## Use of related Publications

A number of related publications are recommended to supplement the use of Charts. In the vicinity of New Zealand these are:

- Symbols and Abbreviations used on Admiralty Paper Charts (Chart 5011)
- New Zealand Pilot (NP 51)
- New Zealand Nautical Almanac (NZ 204)
- New Zealand NTM Edition
- MNZ Marine Ship Notices (for shipmasters)
- MNZ Marine Boat Notices (for fishing vessels and small craft)

For voyages beyond New Zealand, the following British Admiralty publications are recommended:

- Sailing Directions (Pilots)
- List of Lights, Tide Tables and List of Radio Signals (appropriate to the voyage)
- Ocean Passages of the World (NP 136)
- The Mariner's Handbook (NP 100)
- The Nautical Almanac (NP 314)

## **NZMariner**

*NZMariner* is the product name of the official Raster Navigational Chart (RNC) folio for NZ. It is a digital coloured facsimile of NZ paper navigational charts and can be used in Electronic Charting Systems (ECS) and approved Electronic Chart Display and Information Systems (ECDIS).

*NZMariner* is available at no cost for users to download from the LINZ website. Notification of the availability of the monthly Update file is promulgated through the fortnightly NTM Edition. For full details refer to the Annual NZ Notices to Mariners No.1 and the LINZ website.

## **NZ ENC**s

ENCs are specifically designed for use in ECDIS onboard ships. As the Hydrographic Authority for NZ, LINZ is responsible for creating and maintaining the official set of ENCs for the NZ AREA.

New Zealand ENC cells, prefixed by 'NZ', are available from Chart retailers, through the International Centre for ENCs (IC-ENC) [www.ic-enc.org](http://www.ic-enc.org) and PRIMAR global distribution network [www.primar.org](http://www.primar.org). For more information see the LINZ website.

The release of new LINZ ENCs and updates to existing ENCs is promulgated through the fortnightly NTM. ENC updates are issued for all Permanent NTM. For details of the latest Temporary and Preliminary NTM that affect any ENC, Mariners should consult the current fortnightly NTM Edition or the full T&P List that is also updated fortnightly on the LINZ website.

LINZ ENCs currently available are listed on the LINZ website and also on the IHO website: [www.iho.org](http://www.iho.org). For full details refer to the Annual NZ Notices to Mariners No.1.

# 8

## NZ CARRIAGE REQUIREMENTS

### Maritime Rules Part 25

Maritime Rules Part 25: Nautical Charts and Publications ensures that New Zealand continues to meet its obligations under Chapter V Regulation 20 (Nautical Publications) and Regulation 21 (International Code of Signals) of the International Convention for the Safety of Life at Sea, 1974 (SOLAS). Part 25 can be viewed at [www.maritimenz.govt.nz](http://www.maritimenz.govt.nz).

Part 25 sets out the requirements for the carriage of charts and nautical publications on ships. It applies, with certain specified exceptions, to commercial vessels of 12 metres or more in length overall that operate within enclosed water limits and all commercial vessels operating outside the enclosed water limits. Part 25 does not apply to:

- The purchase of any charts for recreational use
- Overseas retailers of New Zealand Charts

Part 25 affects the purchase of Charts, Rule 25.7(2A) states:

*(2A) If a paper nautical chart is published by Land Information New Zealand and purchased in New Zealand, that chart will only meet the requirements of this Part if that Chart:*

- (a) is certified by Land Information New Zealand as correct up to the date of supply to a chart retailer and is either:*
- (i) certified by a correcting chart retailer as correct up to the time of purchase; or*
  - (ii) purchased from a chart retailer before the publication of corrections in the Notice to Mariners that follows the certification by Land Information New Zealand; and*

*(b) is maintained in a fully correct condition.*

### Chart Retailers

The following is a list of LINZ correcting Chart retailers, approved by LINZ to undertake paper Chart corrections and sell Charts in compliance with Part 25.

#### **Boat Books Ltd.**

22 Westhaven Drive  
Westhaven  
Auckland  
Ph: 64-9-358-5691  
Fax: 64-9-358-5817  
Email: [crew@boatbooks.co.nz](mailto:crew@boatbooks.co.nz)  
[www.boatbooks.co.nz](http://www.boatbooks.co.nz)

#### **Steve's Marine Supplies Ltd.**

18 Cross Road  
Sulphur Point  
Tauranga  
Ph: 64-7-578-9593  
Fax: 64-7-577-0758  
Email: [charts@stevesmarine.co.nz](mailto:charts@stevesmarine.co.nz)  
[www.stevesmarine.co.nz](http://www.stevesmarine.co.nz)

#### **\*†Trans Pacific Marine Ltd.**

PO Box 90546, AMSC  
121 Beaumont Street  
Westhaven  
Auckland  
Toll free: 0508 242 787  
Ph: 64-9-303-1459  
Fax: 64-9-307-8170  
Email: [sales@transpacific.co.nz](mailto:sales@transpacific.co.nz)  
[www.transpacific.co.nz](http://www.transpacific.co.nz)

\* **British Admiralty**

† **Australian Chart Agents**

There are also many more Chart retailers selling paper Charts around New Zealand and several outlets overseas. For the full list see the LINZ website. The purchase of paper Charts in compliance with Maritime Rules Part 25 must be from:

- A Chart retailer who has approval from LINZ to undertake Chart corrections, or
- Any LINZ Chart retailer who purchases the Chart from the LINZ Map and Chart Centre and supplies it to the customer before the publication of the next fortnightly NTM Edition. The Chart must be received by the customer while the NTM Edition for which the LINZ Map and Chart Centre updated the Chart is still current.

## Introduction

Maritime Safety Information (MSI) is defined as *navigational and meteorological warnings, meteorological forecasts, and other urgent safety-related messages*. This information is of vital importance to all vessels at sea.

Note that communications related to search and rescue operations such as distress alerts, coordination of operations, local communications and positioning signals are **never** MSI, even when (for some shore-to-ship alerts) they use the International SafetyNET service which is used for MSI. Search and rescue operations may, however, involve the broadcasting of MSI in the navigational warning category.

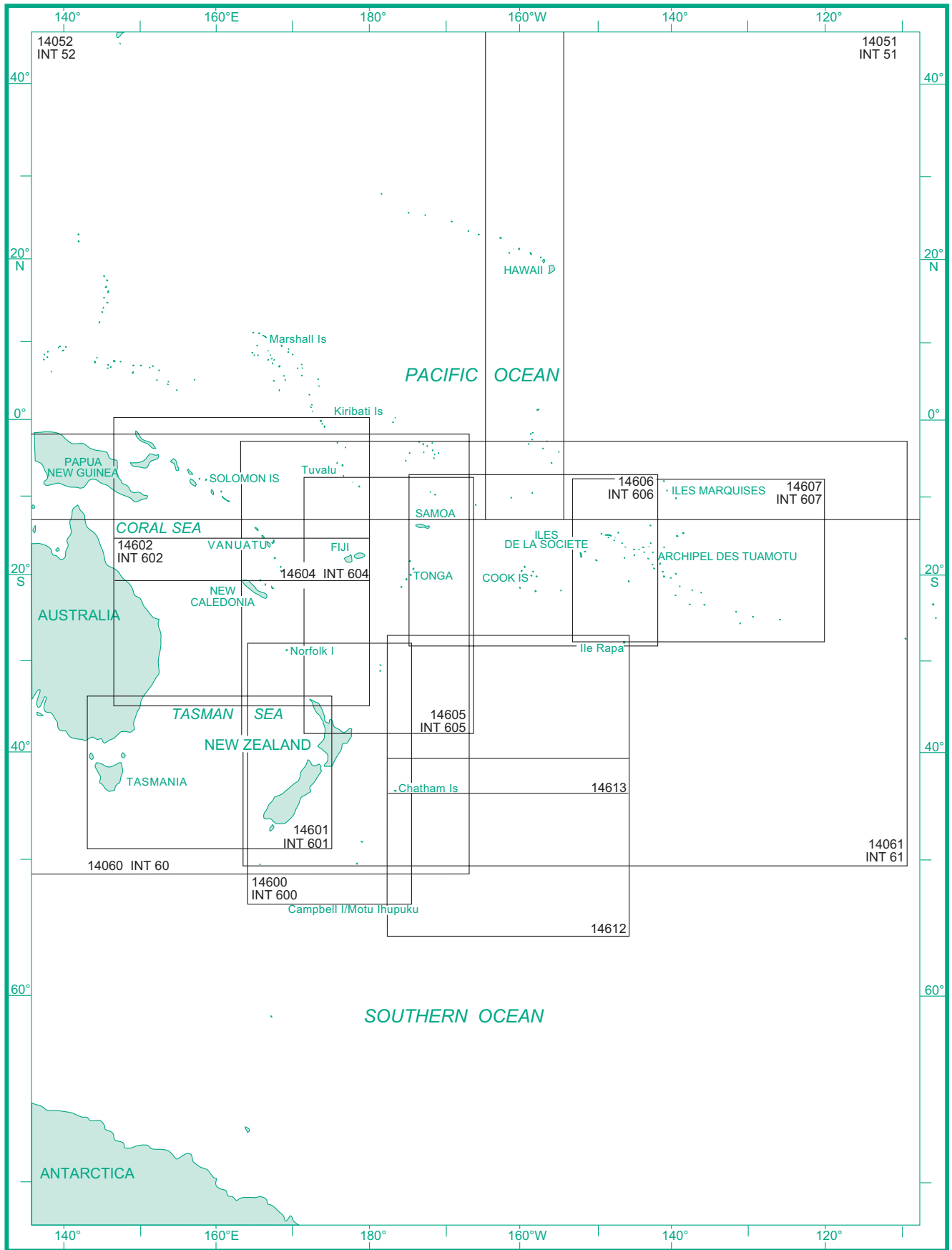
## Radio Warnings

The radio navigational warning messages give the Mariner early information of important incidents which may be dangerous to navigation. When Charts are affected the message may serve as a preliminary NTM. Coastal navigational warnings are issued by Maritime New Zealand (MNZ) and long range warnings for NAVAREA XIV by LINZ.

These navigational warnings are broadcast for as long as the information is valid and remain in force until cancelled by the originating authority. Contact can be made by email: [NAVAREAXIV@linz.govt.nz](mailto:NAVAREAXIV@linz.govt.nz) and for full details see Annual NZ Notices to Mariners No.9.

# PACIFIC OCEAN

(Small scale planning and passage charts)



# PACIFIC OCEAN

## (Small scale planning and passage charts)

Chart No.	Title	Scale 1:	Published	New Edition
<b>International Charts</b>				
INT 51 NZ 14051	North Pacific Ocean (Southeastern Part) -----	10 000 000	4/1988	1/1997
INT 52 NZ 14052	North Pacific Ocean (Southwestern Part) -----	10 000 000	7/1987	4/1997
INT 60 NZ 14060	Australasia and adjacent waters -----	10 000 000	10/1987	10/2008
INT 61 NZ 14061	South Pacific Ocean (Western portion) -----	10 000 000	1/1986	10/2008
INT 600 NZ 14600	New Zealand including Norfolk Island and Campbell Island / Motu Ihupuku -----	3 500 000	4/1974	7/2007
INT 601 NZ 14601	Tasman Sea, New Zealand to S.E. Australia -----	3 500 000	1/1973	7/2007
INT 602 NZ 14602	Tasman and Coral Seas, Australia to Northern New Zealand and Fiji -----	3 500 000	1/1974	7/2007
INT 604 NZ 14604	Coral and Solomon Seas and adjacent seas -----	3 500 000	1/1988	10/1996
INT 605 NZ 14605	New Zealand to Fiji and Samoa Islands -----	3 500 000	3/1976	7/2007
INT 606 NZ 14606	Tonga to Archipel des Tuamotu -----	3 500 000	10/1977	7/2007
INT 607 NZ 14607	Southeast Polynesia -----	3 500 000	10/1987	4/1997
<b>New Zealand Charts</b>				
NZ 14612	Chatham Islands to Pacific-Antarctic Rise -----	3 500 000	1/1987	4/1999
NZ 14613	Chatham Islands to Ile Rapa -----	3 500 000	1/1987	4/1999

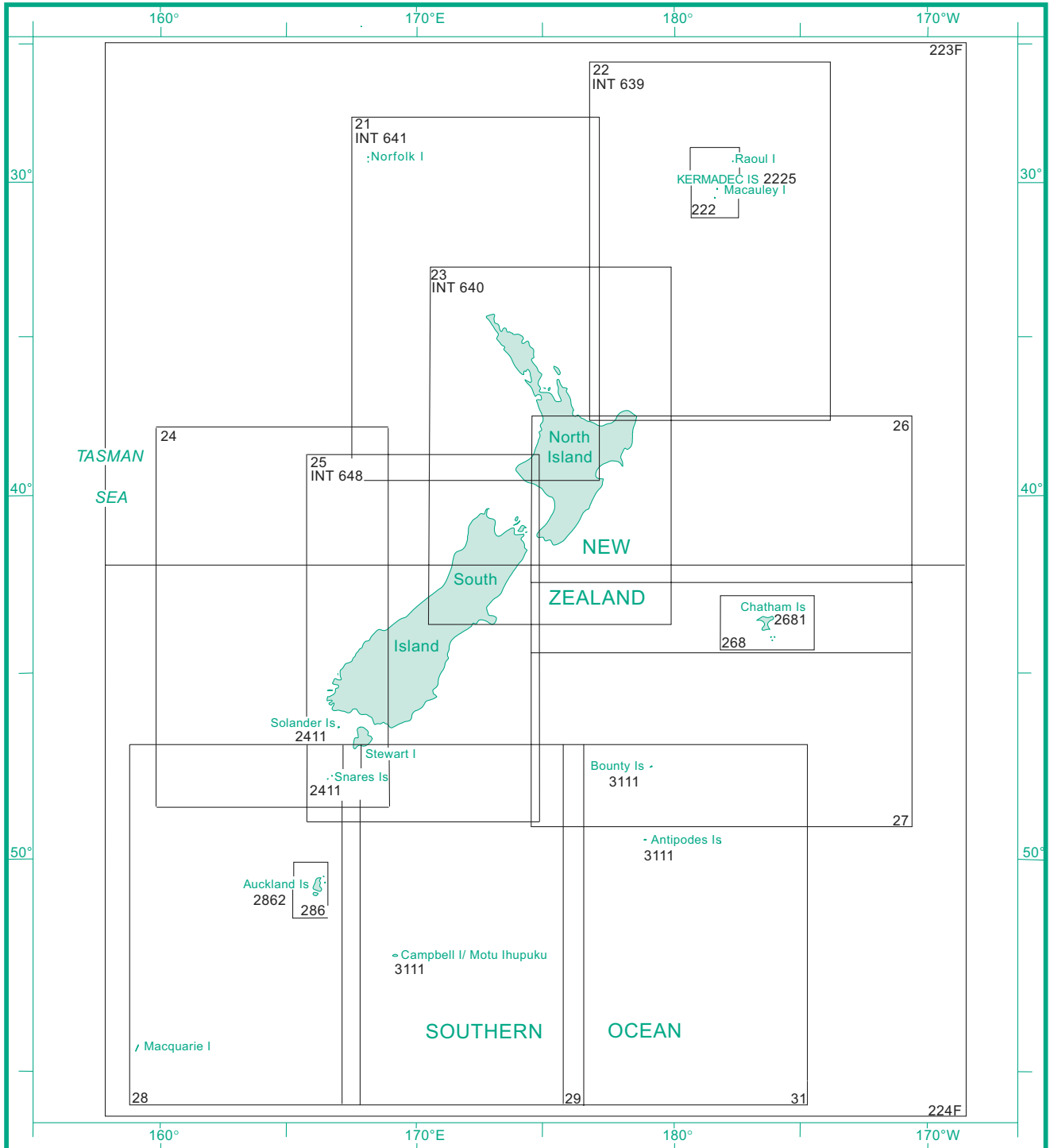


Chart No.	Title	Scale 1:	Published	New Edition
INT 641 NZ 21	Norfolk Island to Cape Egmont -----	1 500 000	4/1992	4/2005
INT 639 NZ 22	Kermadec Islands to East Cape -----	1 500 000	1/1992	4/2005
INT 640 NZ 23	North Island -----	1 500 000	7/1991	4/2005
NZ 24	Western Approaches to South Island -----	1 250 000	7/1980	4/2005
INT 648 NZ 25	South Island -----	1 500 000	4/1991	4/2005
NZ 26	East Cape to Cook Strait including Chatham Islands -----	1 250 000	10/1979	4/2005
NZ 27	Chatham Islands to Bounty Islands -----	1 250 000	10/1979	4/2005
NZ 28	Stewart Island/Rakiura to Macquarie Island -----	1 250 000	1/1980	4/2005
NZ 29	Stewart Island/Rakiura to Campbell Island/Motu Ihupuku--	1 250 000	1/1980	4/2005
NZ 31	Bounty and Antipodes Islands and part of the Southern Ocean -----	1 250 000	4/1980	4/2005
NZ 222	Kermadec Islands -----	300 000	4/1994	6/2008
NZ 223F	New Zealand and adjacent ocean areas - northern sheet --	3 500 000	3/1978	4/1999
NZ 224F	New Zealand and adjacent ocean areas - southern sheet--	3 500 000	3/1978	4/1999
NZ 268	Chatham Islands -----	200 000	10/1995	
NZ 286	Auckland Islands -----	150 000	4/1992	
NZ 2225	Plans in the Kermadec Islands -----		4/1994	6/2008
	Raoul Island -----	30 000		
	Curtis and Cheeseman Islands -----	30 000		
	Macauley Island -----	30 000		
NZ 2681	Plans in the Chatham Islands -----		10/1995	
	Port Waitangi Wharf -----	5 000		
	Waitangi Bay -----	12 500		
	Kaingaroa Harbour -----	18 000		
	Port Hutt -----	24 000		
	Ocean Bay -----	24 000		
NZ 2862	Plans in the Auckland Islands -----		4/1992	
	Enderby Island to Smith Harbour -----	50 000		
	Smith Harbour to South Cape -----	50 000		
NZ 3111	Campbell Island/Motu Ihupuku, Bounty Islands and the Antipodes Island Group -----		6/2008	
	Campbell Island/Motu Ihupuku -----	150 000		
	Perseverance Harbour -----	50 000		
	Bounty Islands -----	100 000		
	Bounty Islands -----	25 000		
	Antipodes Island Group -----	100 000		
	Anchorage Bay -----	25 000		

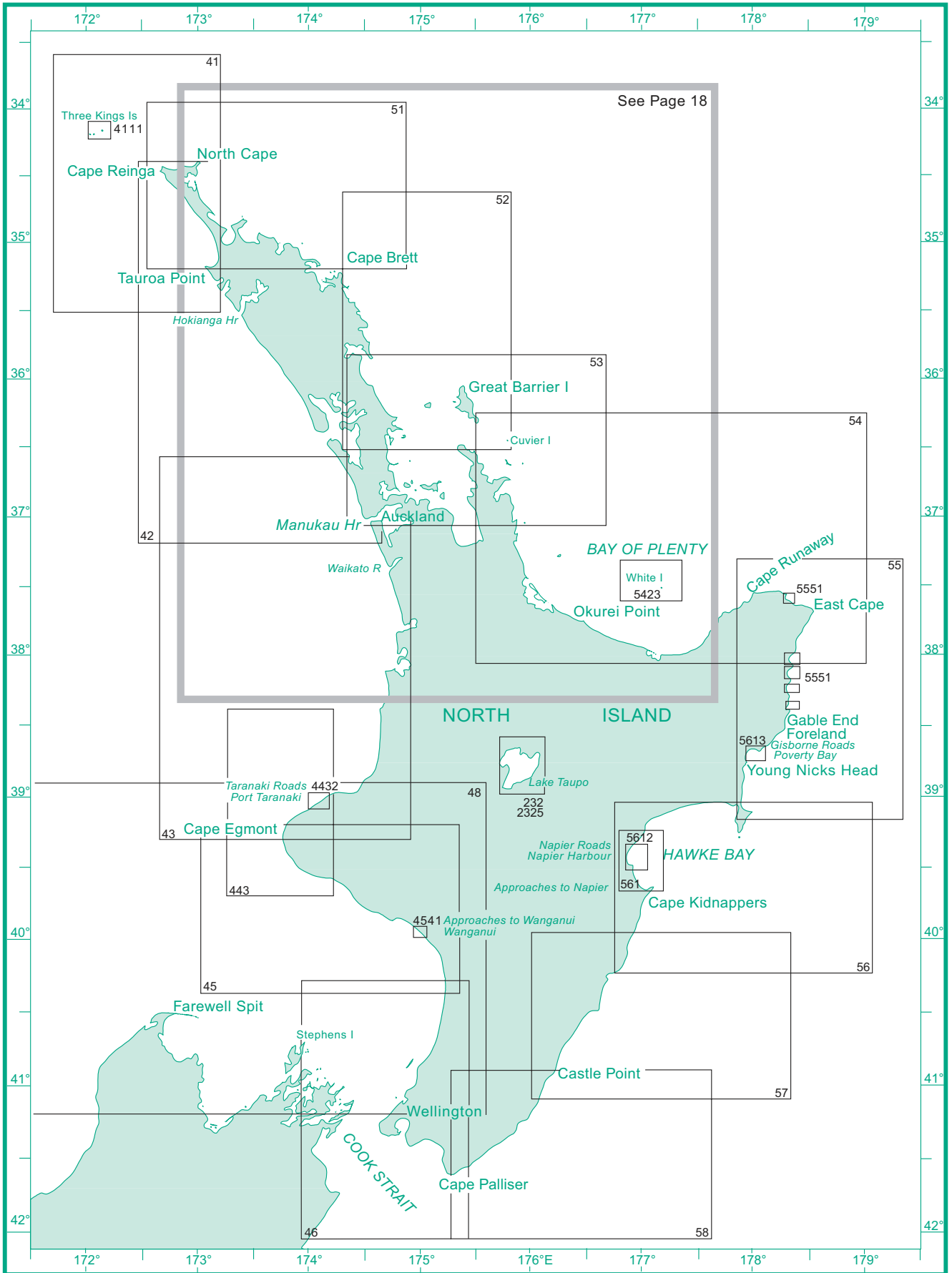


Chart No.	Title	Scale 1:	Published	New Edition
NZ 41	North Cape -----	200 000	10/1972	1/2003
NZ 42	Cape Reinga to Manukau Harbour -----	300 000	10/1981	4/2001
NZ 43	Manukau Harbour to Cape Egmont -----	300 000	10/1980	6/1999
NZ 45	Cape Egmont to Rangitikei River -----	200 000	1/1989	7/2001
NZ 46	Cook Strait -----	200 000	1/1989	7/2000
NZ 48	Western Approaches to Cook Strait -----	400 000	4/1998	4/2000
NZ 51	Tauroa Point to Cape Brett -----	200 000	4/1978	4/2001
NZ 52	Cape Brett to Cuvier Island -----	200 000	10/1974	7/2004
NZ 53	Bream Head to Slipper Island including Hauraki Gulf ----	200 000	10/1992	3/2002
NZ 54	Cuvier Island to East Cape -----	300 000	10/1984	7/1997
NZ 55	Cape Runaway to Table Cape ----- Ranfurly Bank -----	200 000 70 000	4/1998	
NZ 56	Table Cape to Blackhead Point -----	200 000	10/1989	9/2001
NZ 57	Blackhead Point to Castle Point ----- Castlepoint Anchorage -----	200 000 15 000	10/1989	9/2001
NZ 58	Castle Point to Cape Palliser -----	200 000	1/1989	9/2001
NZ 232	Lake Taupo (Taupomoana) ----- Horomatangi Reef ----- Tapuaeharuru Bay ----- Waikato River Entrance ----- Lake Taupo-----	 30 000 20 000 5 000 75 000	6/2006	
NZ 443	Approaches to Port Taranaki -----	150 000	10/1990	5/2010
NZ 561	Approaches to Napier -----	75 000	10/2006	
NZ 2325	Plans in Lake Taupo (Taupomoana) ----- Western Bay ----- Waihi Bay ----- Motuoapa Bay ----- Boat Harbour, Kawakawa Point -----	 40 000 20 000 10 000 5 000	6/2006	
NZ 4111	Three Kings Islands ----- North West Bay ----- South East Bay -----	30 000 6 000 6 000	1/2003	
NZ 4432	Taranaki Roads ----- Port Taranaki -----	25 000 8 000	1/1994	7/2008
NZ 4541	Approaches to Wanganui ----- Whanganui River, Castlecliff Wharves -----	15 000 7 500	4/1995	
NZ 5423	Approaches to Whakaari / White Island -----	50 000	10/1987	7/2001
NZ 5551	Plans on the East Coast ----- Waipiro Bay ----- Tokomaru Bay ----- Hicks Bay ----- Anaura Bay ----- Tolaga Bay -----	 40 000 40 000 40 000 40 000 40 000	4/1997	
NZ 5571	Poverty Bay and Approaches to Gisborne ----- Gisborne Harbour and Entrance -----	24 000 7 000	6/2008	
NZ 5612	Napier Roads ----- Napier Harbour -----	25 000 7 500	10/2006	

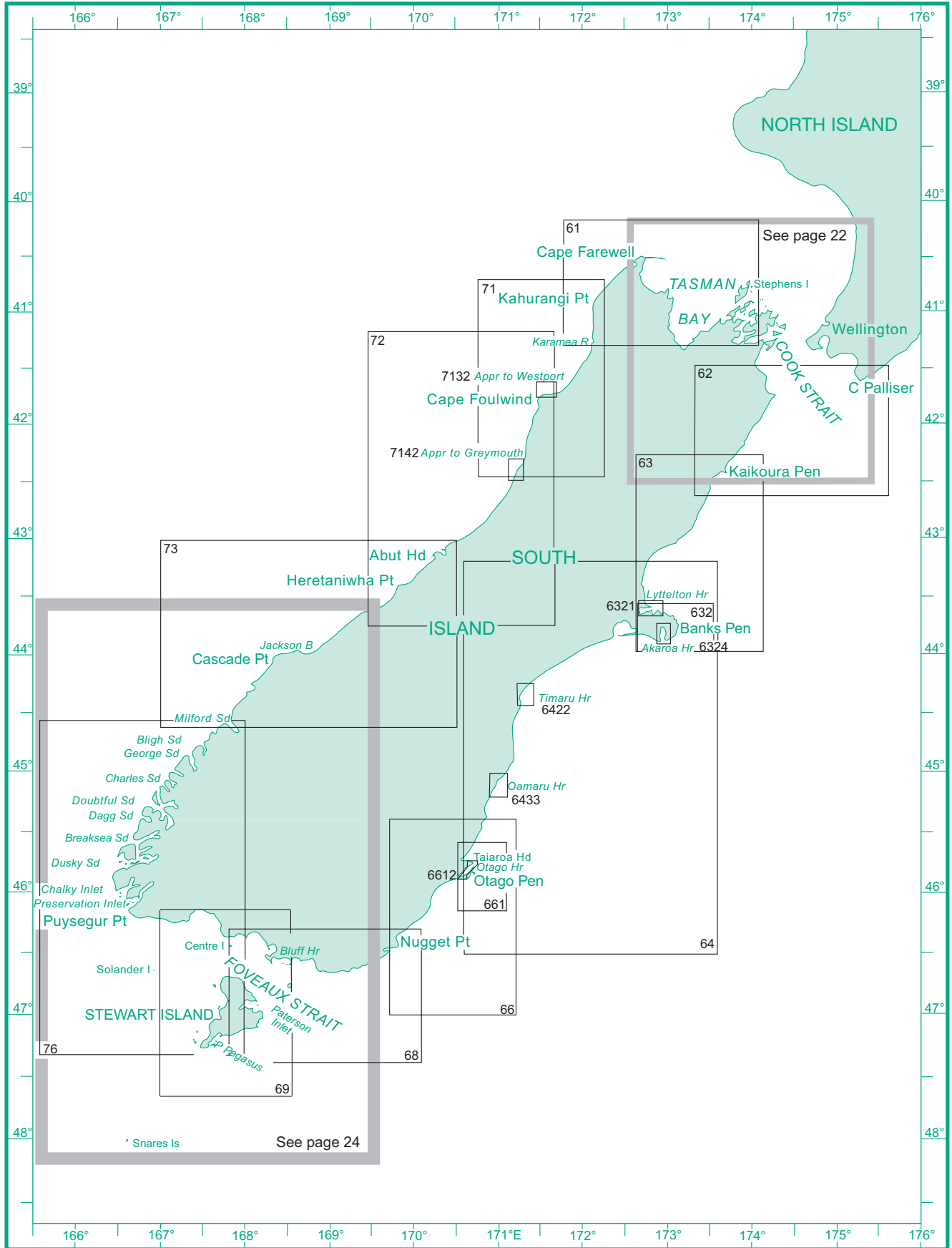


Chart No.	Title	Scale 1:	Published	New Edition
NZ 61	Karamea River to Stephens Island -----	200 000	10/1984	4/1999
NZ 62	Cape Palliser to Kaikoura Peninsula -----	200 000	4/1998	
NZ 63	Kaikoura Peninsula to Banks Peninsula -----	200 000	4/1998	
NZ 64	Banks Peninsula to Otago Peninsula -----	400 000	7/1979	3/2003
NZ 66	Katiki Point to Nugget Point -----	200 000	10/1989	1/2003
NZ 68	Nugget Point to Raratoka Island (Centre Island)-----	200 000	12/1987	8/2009
NZ 69	Stewart Island/Rakiura -----	200 000	7/2001	8/2009
NZ 71	Greymouth to Kahurangi Point -----	200 000	10/1985	3/2002
NZ 72	Cape Foulwind to Heretaniwha Point-----	300 000	7/1984	3/2002
NZ 73	Abut Head to Milford Sound -----	300 000	10/1984	3/2002
	Jackson Bay -----	50 000		
NZ 76	Western Approaches to Foveaux Strait -----	300 000	10/1982	8/2009
NZ 632	Banks Peninsula-----	75 000	7/1980	6/2000
NZ 661	Approaches to Otago Harbour -----	100 000	10/1989	6/2000
NZ 6321	Lyttelton Harbour/Whakaraupo -----	25 000	10/1976	6/2000
	Port of Lyttelton -----	7 500		
NZ 6324	Akaroa Harbour -----	30 000	4/2009	
	French Bay -----	15 000		
NZ 6422	Approaches to Timaru -----	35 000	7/1990	4/2009
	Timaru Harbour -----	7 000		
NZ 6433	Approaches to Oamaru -----	36 000	4/2003	
	Oamaru Harbour -----	10 000		
NZ 6612	Otago Harbour -----	16 000	1/1985	7/2004
	Port Chalmers -----	5 500		
	Dunedin Wharves -----	8 000		
NZ 7132	Approaches to Westport -----	36 000	7/1988	3/2005
	Westport Harbour (North) -----	7 000		
	Westport Harbour (South)-----	7 000		
NZ 7142	Greymouth Harbour and Approaches -----		10/1994	
	Approaches to Greymouth-----	30 000		
	Greymouth Harbour -----	10 000		

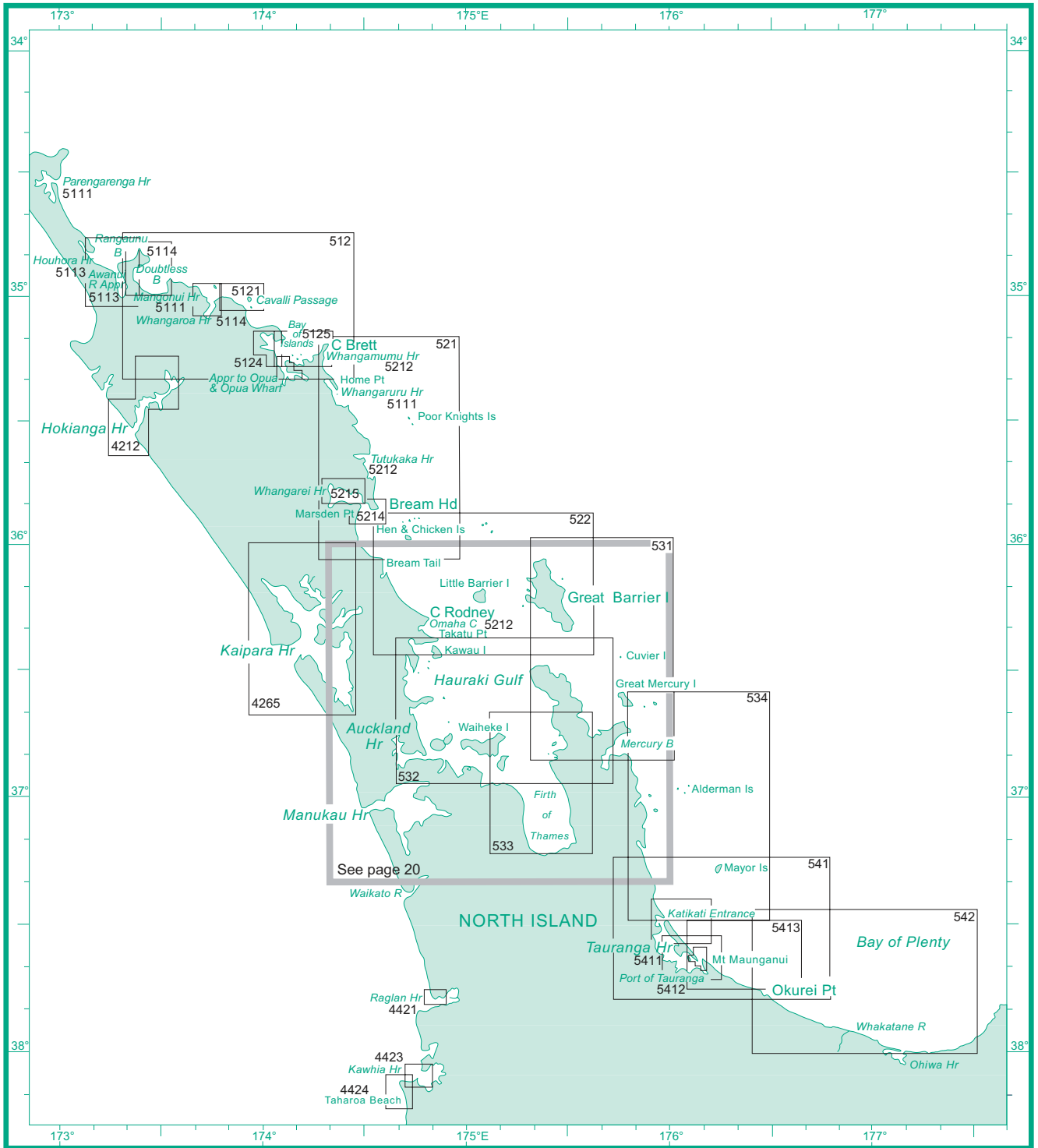


Chart No.	Title	Scale 1:	Published	New Edition
NZ 512	Cape Karikari to Cape Brett -----	100 000	10/1993	12/1999
NZ 521	Cape Brett to Bream Tail -----	100 000	7/1973	10/2010
NZ 522	Bream Tail to Kawau Island including Great Barrier Island -	100 000	7/1974	9/1999
NZ 531	Great Barrier Island to Mercury Bay -----	100 000	10/1975	12/1999
NZ 532	Approaches to Auckland -----	100 000	10/1975	4/2008
NZ 533	Firth of Thames -----	100 000	10/1978	12/1999

Chart No.	Title	Scale 1:	Published	New Edition
NZ 534	Mercury Bay to Katikati Entrance -----	100 000	10/1985	12/1999
NZ 541	Mayor Island to Okurei Point -----	100 000	3/1976	1/1998
NZ 542	Motiti Island to Pehitari Point -----	100 000	4/1997	
	Whakatane River Entrance -----	7 000		
	Ohiwa Harbour Entrance -----	25 000		
NZ 4212	Hokianga Harbour -----	40 000	4/1988	4/2001
	Bar and Entrance -----	20 000		
NZ 4265	Kaipara Harbour -----	75 000	10/1995	7/2008
	Wairoa River (Continuation) -----	75 000		
NZ 4421	Raglan Harbour (Whaingaroa) -----	12 500	10/1978	7/2001
NZ 4423	Kawhia Harbour -----	20 000	4/1992	7/2001
NZ 4424	Taharoa Offshore Terminal -----	25 000	10/1978	7/2001
NZ 5111	Plans Between Parengarenga and Whangaruru -----		10/1977	4/2001
	Parengarenga Harbour -----	36 000		
	Mangonui Harbour -----	9 000		
	Whangaruru Harbour -----	25 000		
NZ 5113	Plans in Rangaunu Bay -----	50 000	4/2009	
	Rangaunu Bay and Awanui River Approaches -----	50 000		
	Awanui River -----	20 000		
	Houhora Harbour -----	25 000		
NZ 5114	Doubtless Bay and Whangaroa Harbour -----		10/1977	4/2001
	Doubtless Bay -----	40 000		
	Whangaroa Harbour and Approaches -----	25 000		
NZ 5121	Cavalli Passage -----	20 000	7/1976	10/1994
NZ 5124	Plans in the Bay of Islands		7/1994	
	Kerikeri Inlet and Te Puna Inlet -----	25 000		
	Approaches to Opuia -----	15 000		
	Opuia Wharf -----	6 000		
NZ 5125	Bay of Islands -----	25 000	7/1994	
NZ 5212	Plans between Whangamumu and Omaha Cove -----		10/1980	9/1999
	Whangamumu Harbour -----	12 000		
	Tutukaka Harbour -----	12 000		
	Omaha Cove -----	6 000		
NZ 5214	Marsden Point -----	18 000	7/2004	
NZ 5215	Whangarei Harbour -----	18 000	7/2004	4/2009
	Whangarei Harbour (Continuation to Town Basin)	18 000		
NZ 5219	Approaches to Marsden Point -----	50 000	4/2010	
NZ 5411	Tauranga Harbour, Katikati Entrance to Mount Maunganui -	40 000	10/1993	7/2004
NZ 5412	Port of Tauranga -----	10 000	1/1992	10/2004
	Western Channel (Continuation) -----	10 000		
NZ 5413	Approaches to Tauranga -----	50 000	1/1992	1/1998

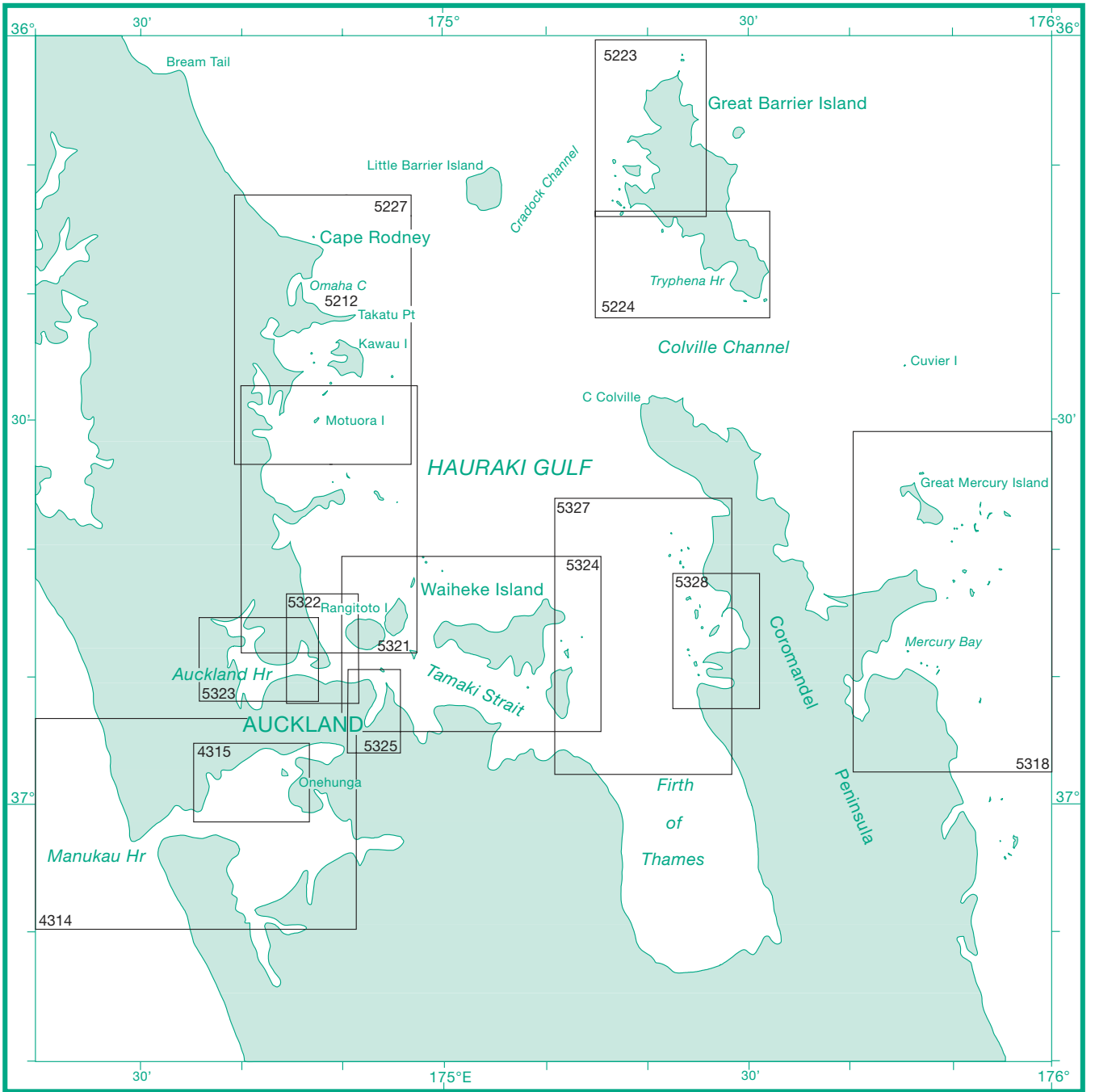


Chart No.	Title	Scale 1:	Published	New Edition
NZ 4314	Manukau Harbour ----- LPG Terminal -----	48 000 3 000	10/1982	6/2004
NZ 4315	Approaches to Onehunga ----- Onehunga Wharf -----	18 000 2 500	10/1982	10/2009
NZ 5223	Great Barrier Island (Northwestern Part) -----	25 000	4/2010	
NZ 5224	Great Barrier Island (Southern Part) -----	25 000	4/2010	
NZ 5227	Goat Island to Waiwera River -----	40 000	4/2008	
NZ 5318	Great Mercury Island / Ahuahu to Otara Bay ----- Whitianga Harbour -----	50 000 10 000	4/1976	9/2001
NZ 5321	Mahurangi Harbour to Rangitoto Island -----	40 000	4/2008	
NZ 5322	Auckland Harbour East ----- Calliope Wharves ----- Commerical Harbour -----	18 000 5 000 7 500	4/2008	
NZ 5323	Auckland Harbour West ----- Kauri Point Wharf ----- Chelsea Wharf -----	18 000 7 500 7 500	4/2008	
NZ 5324	Tamaki Strait and Approaches including Waiheke Island ---	40 000	7/1977	4/2008
NZ 5325	Tamaki River -----	12 000	7/1994	1/2008
NZ 5327	Waiheke Island to Coromandel Peninsula-----	40 000	3/2005	
NZ 5328	Coromandel Harbour -----	20 000	3/2005	

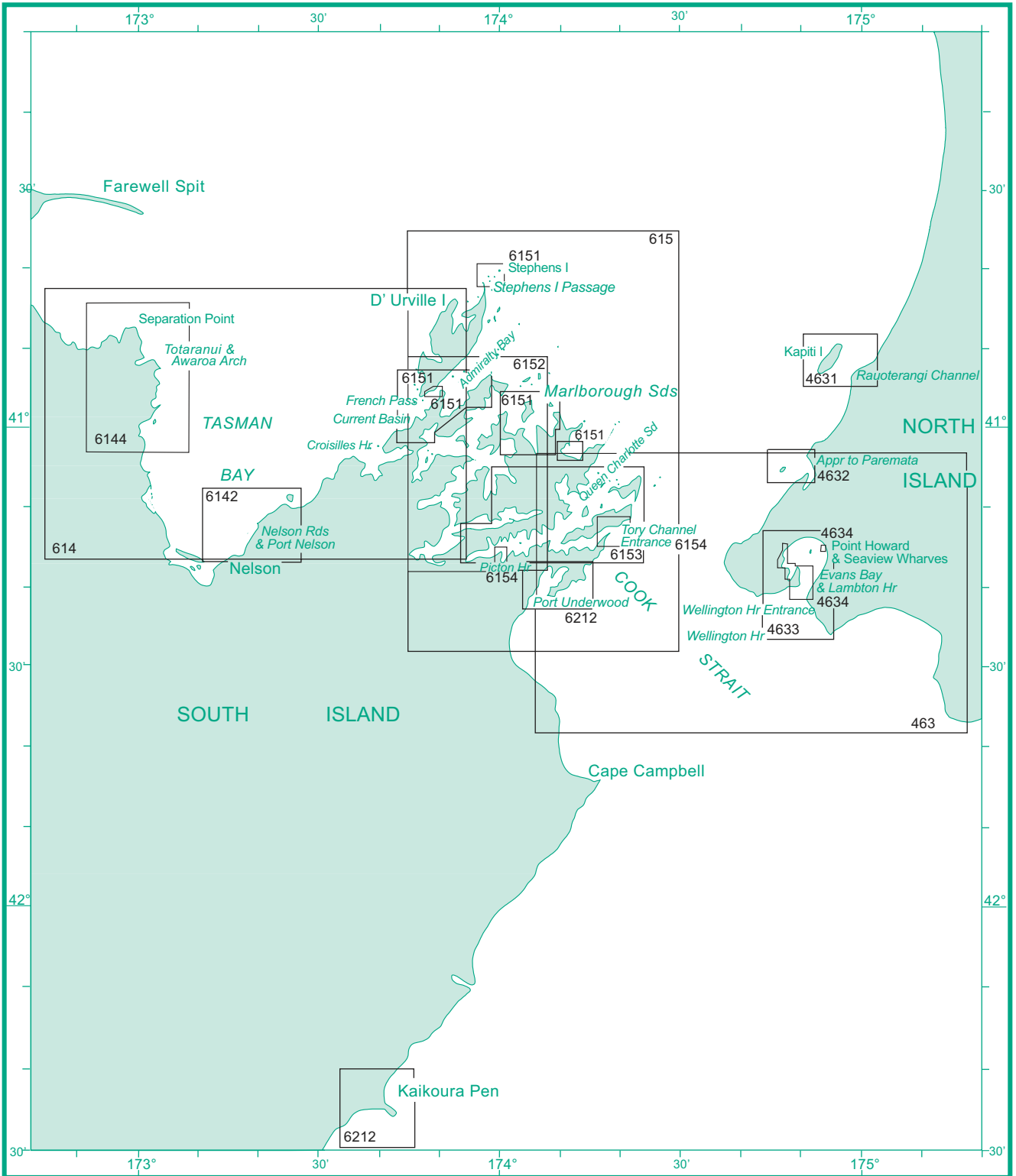


Chart No.	Title	Scale 1:	Published	New Edition
NZ 463	Approaches to Wellington -----	100 000	7/1986	7/2000
NZ 614	Tasman Bay -----	100 000	7/1989	4/2009
	Port Motueka -----	20 000		
	Mapua -----	20 000		
NZ 615	Marlborough Sounds -----	100 000	4/1992	4/1999
NZ 4631	Rauoterangi Channel and Kapiti Island -----	27 000	1/1983	1/2000
NZ 4632	Approaches to Porirua Harbour -----	16 000	4/1982	7/2000
NZ 4633	Wellington Harbour -----	25 000	1/1987	7/2000
NZ 4634	Wellington Harbour Entrance and Plans of Wharves -----		1/1987	7/2000
	Entrance to Wellington Harbour -----	12 500		
	Evans Bay -----	7 000		
	Lambton Harbour -----	7 000		
	Point Howard and Seaview Wharves -----	7 000		
NZ 6142	Nelson Harbour and Entrance -----	36 000	1/1988	6/2008
	Port Nelson -----	6 000		
NZ 6144	Abel Tasman -----	35 000	4/2009	
	Port Golden Bay (Tarakohe) -----	10 000		
NZ 6151	Plans in the Marlborough Sounds -----		1/1993	4/1998
	Approaches to Te Aumiti (French Pass) -----	35 000		
	Te Aumiti (French Pass) -----	10 000		
	Forsyth and Guards Bays -----	30 000		
	Port Gore -----	30 000		
	Stephens Passage -----	30 000		
NZ 6152	Pelorous Sound and Havelock -----	50 000	4/1998	
	Havelock -----	15 000		
NZ 6153	Queen Charlotte Sound -----	36 000	1/1987	7/2000
NZ 6154	Tory Channel Entrance and Picton Harbour -----		1/1987	4/2010
	Tory Channel Entrance -----	11 000		
	Picton Harbour -----	10 000		
	Picton Wharves -----	3 000		
NZ 6212	Plans on the North East Coast of South Island -----		5/1999	
	Port Underwood -----	35 000		
	Kaikoura Peninsula -----	30 000		
	Ingles Bay -----	10 000		
	South Bay -----	10 000		

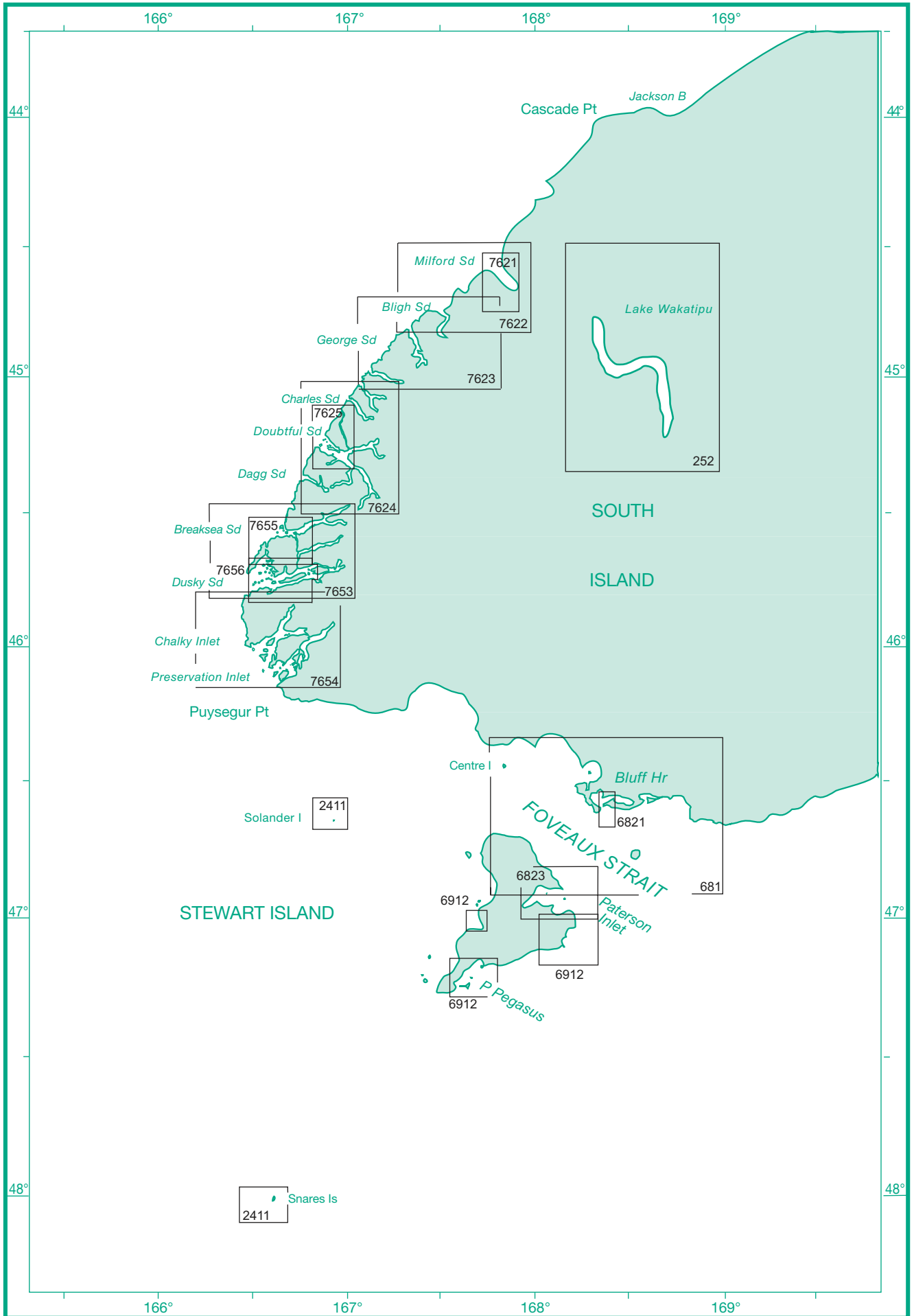


Chart No.	Title	Scale 1:	Published	New Edition
NZ 252	Lake Wakatipu ----- Queenstown Bay to Picnic Point ----- Frankton Arm to Queenstown Bay ----- Queenstown Bay -----	100 000 50 000 20 000 5 000	10/2006	
NZ 681	Approaches to Bluff and Riverton/Aparima ----- Riverton/Aparima -----	100 000 40 000	10/1987	8/2009
NZ 2411	Snares Islands/Tini Heke and Solander Island (Hautere) --- Snares Islands/Tini Heke ----- Solander Island (Hautere) ----- Ho Ho Bay -----	30 000 30 000 7 500	7/2000	
NZ 6821	Bluff Harbour and Entrance ----- Port of Bluff -----	12 000 7 000	10/1985	8/2009
NZ 6823	Paterson Inlet/Whaka a Te Wera ----- Halfmoon Bay ----- Glory Cove -----	50 000 25 000 25 000	4/1988	7/2000
NZ 6912	Plans in Stewart Island/Rakiura ----- Port Adventure and Lords River/Tutaekawetoweto Port Pegasus/Pikihatiti ----- East Harbour -----	40 000 40 000 40 000	7/2001	
NZ 7621	Milford Sound / Piopiotahi----- Deep Water Basin and Fresh Water Basin -----	25 000 10 000	8/2009	
NZ 7622	Milford Sound / Piopiotahi to Sutherland Sound -----	60 000	4/1998	8/2009
NZ 7623	Bligh Sound to Caswell Sound -----	60 000	4/1999	
NZ 7624	Charles Sound to Dagg Sound ----- Deep Cove -----	60 000 10 000	4/1999	8/2009
NZ 7625	Thompson Sound and Doubtful Sound/Patea ----- Neck Cove and Deas Cove ----- Patea Passage (Gaol Passage) -----	25 000 7 500 10 000	8/2009	
NZ 7653	Breaksea Sound and Dusky Sound -----	60 000	1/1997	8/2009
NZ 7654	Chalky and Preservation Inlets ----- North Port ----- South Port -----	60 000 25 000 25 000	1/1997	3/2002
NZ 7655	Breaksea Sound -----	25 000	8/2009	
NZ 7656	Dusky Sound ----- Continuation of Dusky Sound -----	25 000 25 000	8/2009	

SOUTH WEST PACIFIC OCEAN

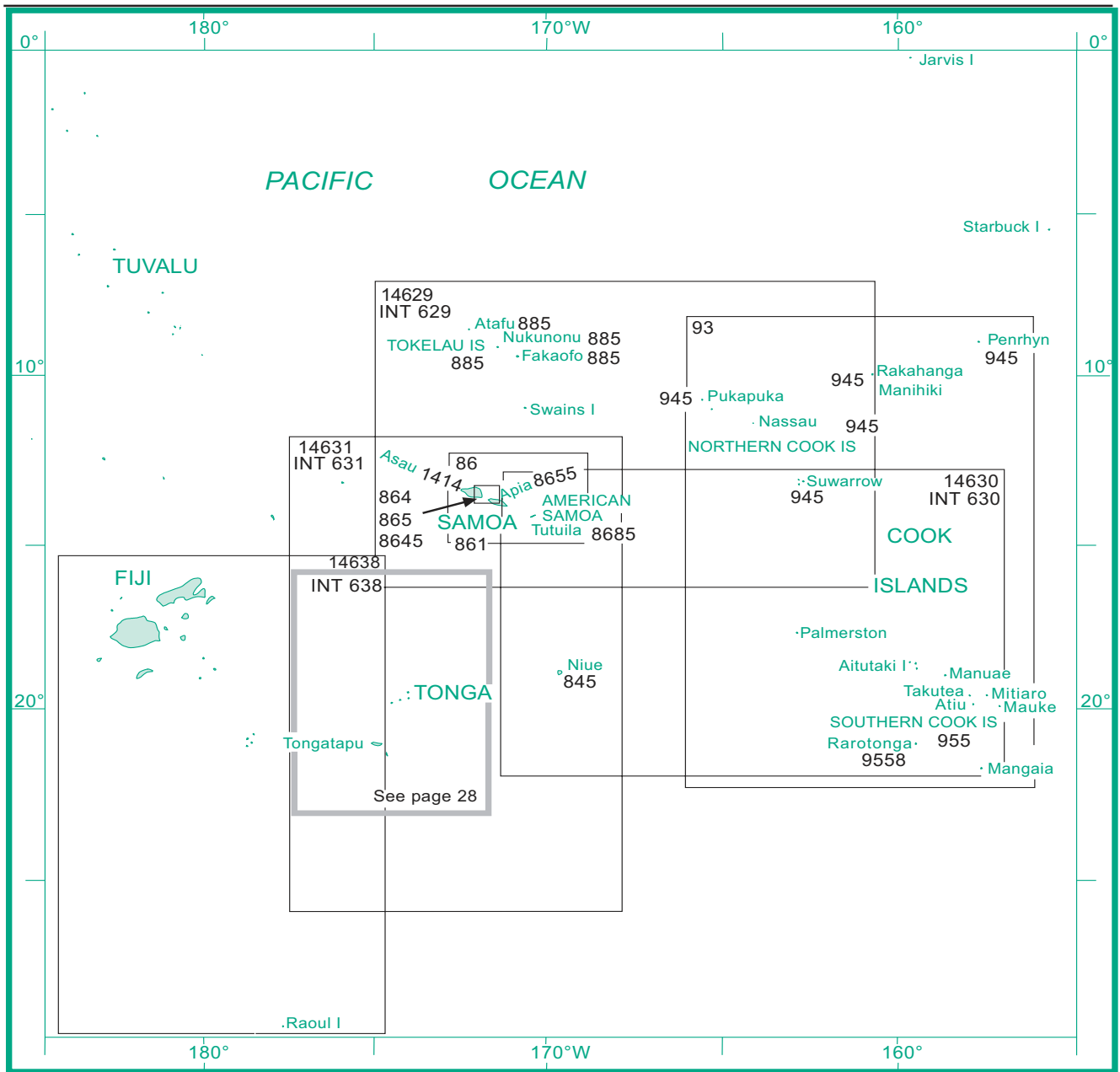


Chart No.	Title	Scale 1:	Published	New Edition
NZ 86	Samoa Islands -----	500 000	6/2010	
NZ 93	Cook Islands -----	1 500 000	4/1995	10/1997
NZ 845	Niue -----	150 000	4/2009	
	Alofi Anchorage -----	6 000		
	Alofi Landing -----	1 000		
* NZ 861	Plans in Samoa -----	50 000	6/2010	
	Fagaloa Bay -----	25 000		
	Safata Harbour -----	27 920		
	Faleālupo Road -----	25 000		
	Satupa'itea Road -----	50 000		
	Faleālili Harbour -----	33 300		
	Uafato Bay -----	12 260		
	Saluafata Harbour -----	25 000		
	Vailele Bay -----	20 050		
	Falefa Harbour -----	39 030		
	Sala'ilua Bay -----	50 000		
	Fagali'i Bay -----	24 270		
NZ 864	Apolima Strait -----	50 000	6/2010	
	Matautu Bay -----	50 000		

Chart No.	Title	Scale 1:	Published	New Edition
NZ 865	Approaches to Apia -----	50 000	6/2010	
NZ 885	Tokelau -----	500 000	1/1997	4/2009
	Atafu -----	100 000		
	Nukunonu -----	100 000		
	Fakaofu -----	100 000		
NZ 945	Plans of the Cook Islands - northern sheet -----		10/1995	
	Pukapuka -----	100 000		
	Nassau -----	75 000		
	Suwarrow -----	100 000		
	Suwarrow Lagoon Entrance -----	25 000		
	Manihiki -----	75 000		
	Manihiki Anchorage -----	15 000		
	Rakahanga -----	50 000		
	Penrhyn -----	75 000		
	Taruia Passage to Gudgeon Bay -----	12 500		
	Taruia Passage -----	6 000		
NZ 955	Plans of the Cook Islands - southern sheet -----		10/1993	
	Aitutaki -----	60 000		
	Arutanga Anchorage -----	15 000		
	Palmerston -----	75 000		
	Mitiaro -----	75 000		
	Mauke -----	75 000		
	Manuae -----	75 000		
	Takutea -----	75 000		
	Atiu -----	75 000		
	Mangaia -----	75 000		
* NZ 1414	Asau Harbour -----	10 000	10/1980	
NZ 8645	Plans in Apolima Strait -----		6/2010	
	Salelologa Harbour -----	10 000		
	Mulifanua Harbour -----	10 000		
NZ 8655	Apia Harbour -----	7 500	7/2007	
* NZ 8685	Islands in American Samoa -----		10/1993	
	Pago Pago Harbour -----	25 000		
	Swains Island -----	50 000		
	Tutuila Island -----	60 000		
	Manua Islands -----	100 000		
	Rose Atoll -----	100 000		
NZ 9558	Rarotonga -----	40 000	10/1992	
	Approaches to Avatiu & Avarua Harbours -----	9 000		
	Avatiu Harbour -----	3 000		
INT 629 NZ 14629	Samoa Islands to Northern Cook Islands and Tokelau -----	1 500 000	4/1993	4/1997
INT 630 NZ 14630	Samoa Islands to Southern Cook Islands -----	1 500 000	4/1993	4/1997
INT 631 NZ 14631	Samoa Islands to Tonga including Niue -----	1 500 000	4/1993	4/1997
INT 638 NZ 14638	Fiji to Kermadec Islands including Tongatapu -----	1 500 000	10/1987	10/1996

\* Fathom Chart - Not available in NZMariner

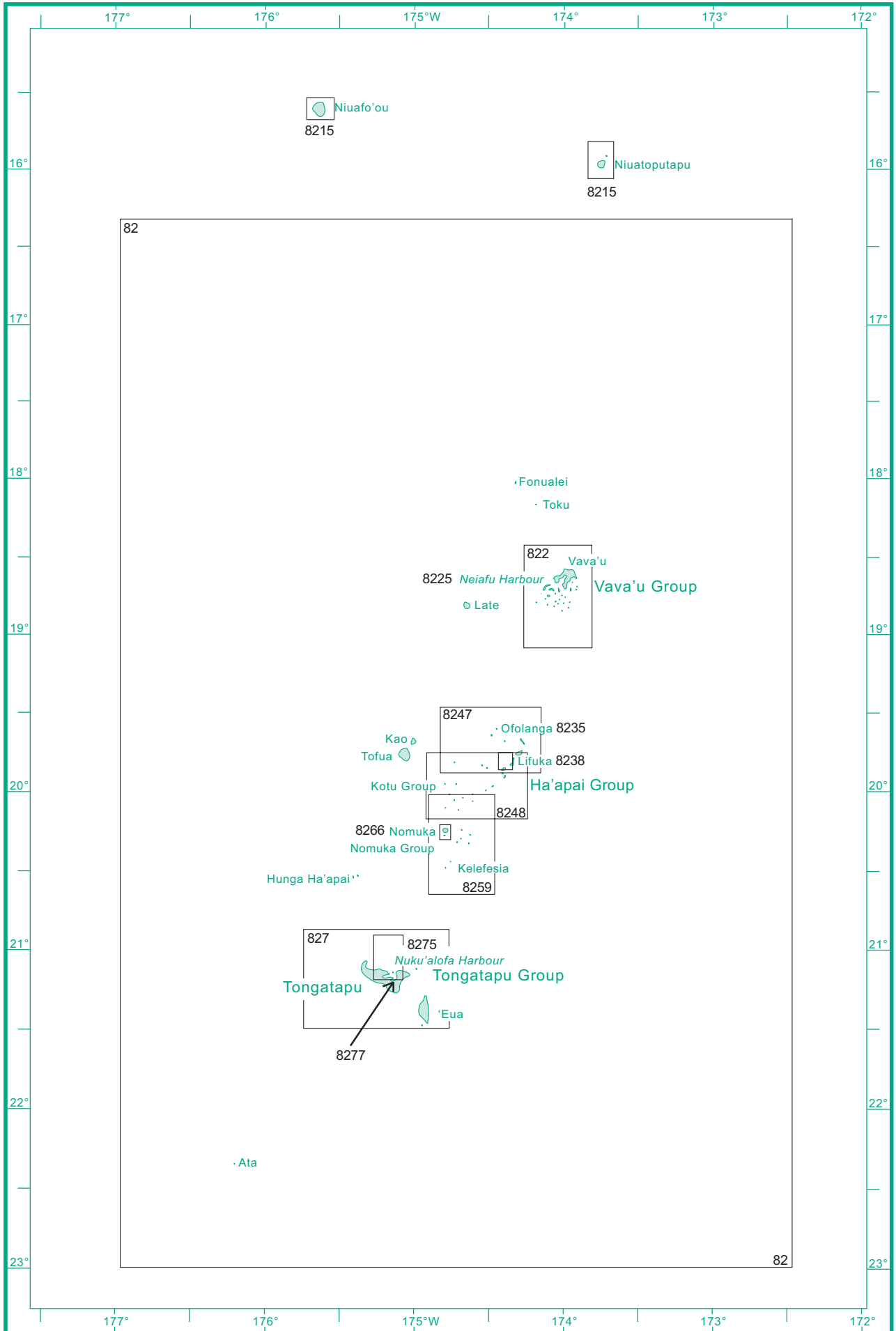


Chart No.	Title	Scale 1:	Published	New Edition
T 82 NZ 82	Tonga -----	750 000	10/1993	
T 822 NZ 822	Vava'u Group -----	50 000	5/2010	
T 827 NZ 827	Approaches to Tongatapu including 'Eua -----	100 000	10/1998	
T 8215 NZ 8215	Niuatoputapu Group and Niuafu'ou -----		1/1996	
	Niuatoputapu and Tafahi -----	100 000		
	Niuafu'ou -----	100 000		
	Niuatoputapu Harbour -----	9 000		
	Niuatoputapu Harbour Entrance -----	3 000		
T 8225 NZ 8225	Neiafu Harbour -----	10 000	5/2010	
* T 8235 NZ 8235	Anchorage in the Friendly Islands -----		10/1993	
	Ofolanga Island and Anchorage -----	12 100		
T 8238 NZ 8238	Approaches to Lifuka -----	15 000	4/2005	
	Ava Limu Moto Entrance -----	8 000		
* T 8247 NZ 8247	Ha'apai Group - northern portion -----	72 600	10/1993	
* T 8248 NZ 8248	Ha'apai Group - southern portion -----	72 600	10/1993	
* T 8259 NZ 8259	Nomuka Group -----	72 600	7/1993	
* T 8266 NZ 8266	Anchorage in Tonga -----		7/1993	
	Nomuka Harbour -----	18 150		
T 8275 NZ 8275	Approaches to Nuku'alofa Harbour -----	30 000	7/1997	4/2010
T 8277 NZ 8277	Nuku'alofa Harbour -----	10 000	4/2010	

\* Fathom Chart - Not available in NZMariner

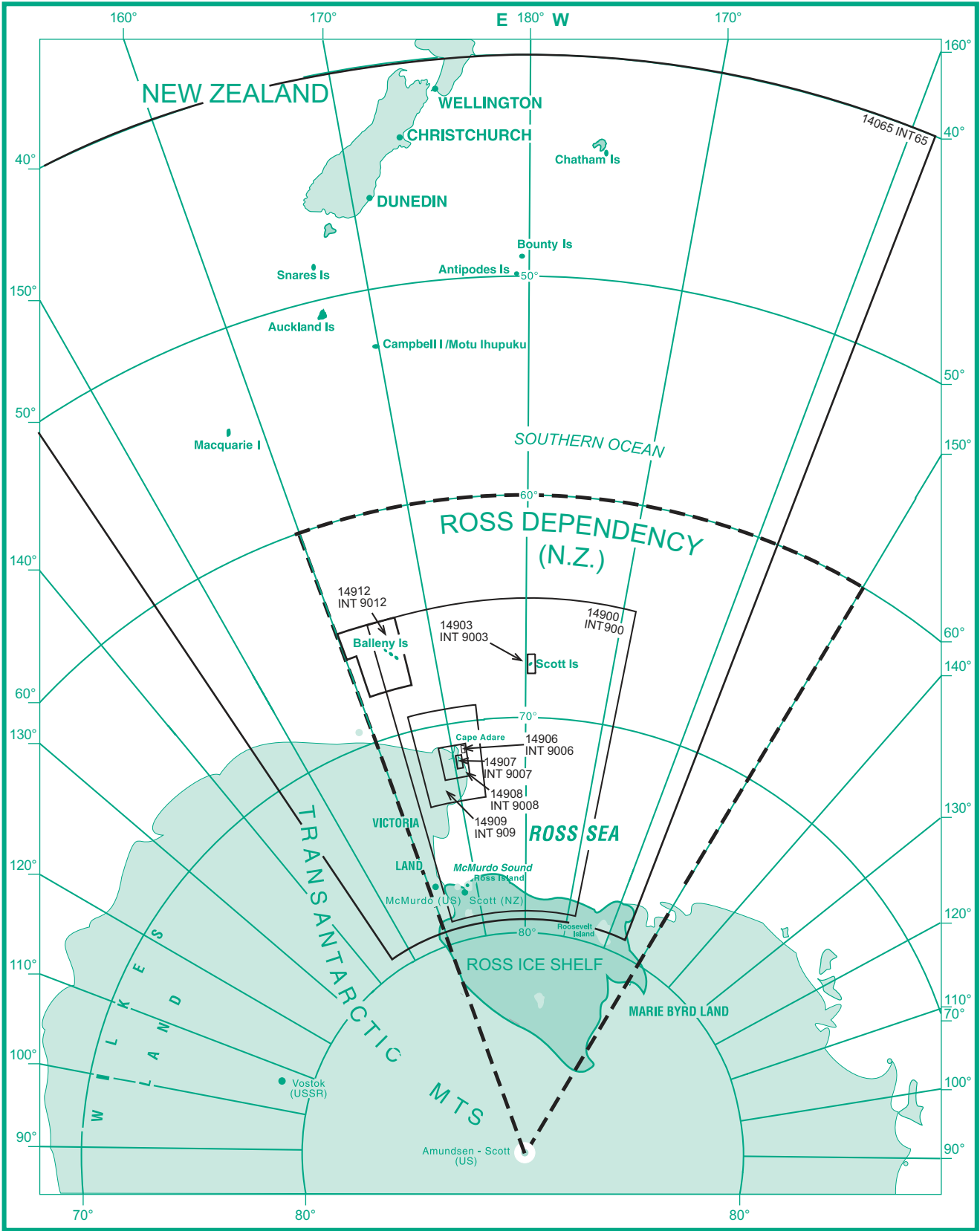


Chart No.	Title	Scale 1:	Published	New Edition
INT 65 NZ 14065	Ross Sea to New Zealand -----	10 000 000	10/1994	1/1997
INT 900 NZ 14900	Ross Sea -----	2 000 000	4/1998	
INT 9001 NZ 14901	Cape Royds to Pram Point -----	60 000	7/2007	
INT 9002 NZ 14902	McMurdo Station and Scott Base -----	5 000	7/2007	
INT 9003 NZ 14903	Approaches to Scott Island ----- Scott Island -----	75 000 25 000	8/2008	
INT 9006 NZ 14906	Cape Adare and Cape Hallett ----- Ridley Beach ----- Seabee Hook ----- Cape Adare ----- Cape Hallett -----	 15 000 15 000 50 000 50 000	1/2003	8/2006
INT 9007 NZ 14907	Possession Islands -----	60 000	1/2003	8/2006
INT 9008 NZ 14908	Cape Adare to Cape Daniell -----	200 000	1/2003	8/2006
INT 909 NZ 14909	Cape Hooker to Coulman Island -----	500 000	6/2004	
INT 9012 NZ 14912	Balleny Islands ----- Balleny Seamount (Continuation) -----	300 000 300 000	8/2006	

## NUMERICAL CHART LIST

## New Zealand Charts

Chart No.	Scale 1:	Page	Chart No.	Scale 1:	Page
INT 641	1 500 000	13	NZ 534	100 000	19
NZ 21			NZ 541	100 000	19
INT 639	1 500 000	13	NZ 542	100 000	19
NZ 22			NZ 561	75 000	15
INT 640	1 500 000	13	NZ 614	100 000	23
NZ 23			NZ 615	100 000	23
NZ 24	1 250 000	13	NZ 632	75 000	17
INT 648	1 500 000	13	NZ 661	100 000	17
NZ 25			NZ 681	100 000	25
NZ 26	1 250 000	13	T/NZ 822	50 000	29
NZ 27	1 250 000	13	T/NZ 827	100 000	29
NZ 28	1 250 000	13	NZ 845	150 000	26
NZ 29	1 250 000	13	NZ 861	50 000	26
NZ 31	1 250 000	13	NZ 864	50 000	26
NZ 41	200 000	15	NZ 865	50 000	27
NZ 42	300 000	15	NZ 885	500 000	27
NZ 43	300 000	15	NZ 945	Various	27
NZ 45	200 000	15	NZ 955	Various	27
NZ 46	200 000	15	NZ 1414	10 000	27
NZ 48	400 000	15	NZ 2225	30 000	13
NZ 51	200 000	15	NZ 2325	Various	15
NZ 52	200 000	15	NZ 2411	Various	25
NZ 53	200 000	15	NZ 2681	Various	13
NZ 54	300 000	15	NZ 2862	50 000	13
NZ 55	200 000	15	NZ 3111	Various	13
NZ 56	200 000	15	NZ 4111	30 000	15
NZ 57	200 000	15	NZ 4212	40 000	19
NZ 58	200 000	15	NZ 4265	75 000	19
NZ 61	200 000	17	NZ 4314	48 000	21
NZ 62	200 000	17	NZ 4315	18 000	21
NZ 63	200 000	17	NZ 4421	12 500	19
NZ 64	400 000	17	NZ 4423	20 000	19
NZ 66	200 000	17	NZ 4424	25 000	19
NZ 68	200 000	17	NZ 4432	25 000	15
NZ 69	200 000	17	NZ 4541	15 000	15
NZ 71	200 000	17	NZ 4631	27 000	23
NZ 72	300 000	17	NZ 4632	16 000	23
NZ 73	300 000	17	NZ 4633	25 000	23
NZ 76	300 000	17	NZ 4634	Various	23
T/NZ 82	750 000	29	NZ 5111	Various	19
NZ 86	500 000	26	NZ 5113	50 000	19
NZ 93	1 500 000	26	NZ 5114	Various	19
NZ 222	300 000	13	NZ 5121	20 000	19
NZ 223F	3 500 000	13	NZ 5124	Various	19
NZ 224F	3 500 000	13	NZ 5125	25 000	19
NZ 232	Various	15	NZ 5212	Various	19
NZ 252	100 000	25	NZ 5214	18 000	19
NZ 268	200 000	13	NZ 5215	18 000	19
NZ 286	150 000	13	NZ 5219	50 000	19
NZ 443	150 000	15	NZ 5223	25 000	21
NZ 463	100 000	23	NZ 5224	25 000	21
NZ 512	100 000	18	NZ 5227	40 000	21
NZ 521	100 000	18	NZ 5318	50 000	21
NZ 522	100 000	18	NZ 5321	40 000	21
NZ 531	100 000	18	NZ 5322	18 000	21
NZ 532	100 000	18	NZ 5323	18 000	21
NZ 533	100 000	18	NZ 5324	40 000	21
			NZ 5325	12 000	21

Small Scale  
International Charts

Chart No.	Scale 1:	Page	Chart No.	Scale 1:	Page
NZ 5327	40 000	21	INT 638	1 500 000	27
NZ 5328	20 000	21	NZ 14638		
NZ 5411	40 000	19	INT 51	10 000 000	11
NZ 5412	10 000	19	NZ 14051		
NZ 5413	50 000	19	INT 52	10 000 000	11
NZ 5423	50 000	15	NZ 14052		
NZ 5551	40 000	15	INT 60	10 000 000	11
NZ 5571	24 000	15	NZ 14060		
NZ 5612	25 000	15	INT 61	10 000 000	11
NZ 6142	36 000	23	NZ 14061		
NZ 6144	35 000	23	INT 65	10 000 000	31
NZ 6151	Various	23	NZ 14065		
NZ 6152	50 000	23	INT 600	3 500 000	11
NZ 6153	36 000	23	NZ 14600		
NZ 6154	Various	23	INT 601	3 500 000	11
NZ 6212	Various	23	NZ 14601		
NZ 6321	25 000	17	INT 602	3 500 000	11
NZ 6324	30 000	17	NZ 14602		
NZ 6422	35 000	17	INT 604	3 500 000	11
NZ 6433	36 000	17	NZ 14604		
NZ 6612	16 000	17	INT 605	3 500 000	11
NZ 6821	12 000	25	NZ 14605		
NZ 6823	50 000	25	INT 606	3 500 000	11
NZ 6912	40 000	25	NZ 14606		
NZ 7132	36 000	17	INT 607	3 500 000	11
NZ 7142	Various	17	NZ 14607		
NZ 7621	25 000	25	INT 900	2 000 000	31
NZ 7622	60 000	25	NZ 14900		
NZ 7623	60 000	25	INT 9001	60 000	31
NZ 7624	60 000	25	NZ 14901		
NZ 7625	25 000	25	INT 9002	5 000	31
NZ 7653	60 000	25	NZ 14902		
NZ 7654	60 000	25	INT 9003	75 000	31
NZ 7655	25 000	25	NZ 14903		
NZ 7656	25 000	25	INT 9006	Various	31
T/NZ 8215	Various	29	NZ 14906		
T/NZ 8225	10 000	29	INT 9007	60 000	31
T/NZ 8235	12 100	29	NZ 14907		
T/NZ 8238	15 000	29	INT 9008	200 000	31
T/NZ 8247	72 600	29	NZ 14908		
T/NZ 8248	72 600	29	INT 909	500 000	31
T/NZ 8259	72 600	29	NZ 14909		
T/NZ 8266	18 150	29	INT 9012	300 000	31
T/NZ 8275	30 000	29	NZ 14912		
T/NZ 8277	10 000	29			
NZ 8645	10 000	27			
NZ 8655	7 500	27			
NZ 8685	Various	27			
NZ 9558	40 000	27			
NZ 14612	3 500 000	11			
NZ 14613	3 500 000	11			
INT 629	1 500 000	27			
NZ 14629					
INT 630	1 500 000	27			
NZ 14630					
INT 631	1 500 000	27			
NZ 14631					

